



OCZ Vertex 3 SSD Series – MAX IOPS Edition

Award-winning SSD performance with maximum throughput

Enhanced IOPS Performance

Vertex 3 Solid State Drives are designed and built to unleash the full potential of the 6Gbps SATA III interface and significantly improve your overall computing experience over any other SSD solution. The *Max IOPS* edition maximizes data throughput with up to 75,000 IOPS compared to 60,000 with the standard version.

A Superior PC Experience

In addition to maximum performance, a Vertex 3 upgrade promotes cooler, quieter, and more energy efficient conditions compared to traditional hard drives. With no moving parts, SSDs provide peace of mind with their superior durability and reliability.

APPLICATIONS

- Workstation PCs
- Desktop PCs
- Notebooks

Performance

(To achieve full performance a native SATA 6Gbps controller is suggested)

	120GB	240GB
Max Read <i>Compressible Data</i> ¹	up to 550 MB/s	up to 550 MB/s
Max Write <i>Compressible Data</i> ¹	up to 500 MB/s	up to 500 MB/s
4KB Random Read <i>Compressible Data</i> ²	35,000 IOPS (135 MB/s)	55,000 IOPS (215 MB/s)
4KB Random Write <i>Compressible Data</i> ²	75,000 IOPS (290 MB/s)	65,000 IOPS (250 MB/s)
Sequential Read <i>Incompressible Data</i> ³	500 MB/s	510 MB/s
Sequential Write <i>Incompressible Data</i> ³	230 MB/s	240 MB/s
4K Random Read <i>Incompressible Data</i> ³	47,000 IOPS (185 MB/s)	58,500 IOPS (230 MB/s)
4K Random Write <i>Incompressible Data</i> ³	47,000 IOPS (185 MB/s)	48,500 IOPS (190 MB/s)

System Configuration: Intel® Core™ i5 2500K processor, ASUS P8P67 Deluxe Board, Microsoft Windows 7 Ultimate 64-Bit

SPECIFICATIONS

NAND Components	3Xnm Multi-Level Cell (MLC)
Interface	SATA III / 6Gbps (Backwards compatible with SATA II / 3Gbps, but optimized for SATA 6Gbps)
Form Factor	2.5 Inch
Controller	SandForce® 2281
Dimensions (L x W x H)	99.8 x 69.63 x 9.3 mm
Seek Time	0.1 ms
Weight	77g
Power Consumption	Idle: 1.65 Watts Active: 3 Watts
Operating Temperature	0°C ~ 55°C
Storage Temperature	-45°C ~ 85°C
Shock Resistance	1500G
Certifications	RoHS, CE, FCC
MTBF	2 million hours
ECC Recovery	Up to 55 bits correctable per 512-byte sector (BCH) *varies depending on exact configuration
Product Health Monitoring	Self-Monitoring, Analysis and Reporting Technology (S.M.A.R.T.)
Serial ATA (SATA)	Fully compliant with Serial ATA International Organization: Serial ATA Revision 3.0. Fully compliant with ATA/ATAPI-8 Standard Native Command Queuing (NCQ)
Operating System	Windows XP 32-Bit and 64-Bit; Windows Vista 32-Bit and 64-Bit; Windows 7 32-Bit and 64-Bit; Mac OS X; Linux
Power Requirements	Standard SATA Power Connector
Performance Optimization	TRIM (requires OS support)
System Integration	Bundled with 3.5" desktop adapter bracket
Service & Support	3-Year Warranty, Toll-Free Tech Support, 24 Hour Forum Support, Firmware Updates



¹ Maximum Sequential Speeds are determined using ATTO

² Small file I/O performance is measured using Iometer 2008, Queue Depth 32, 4KB Aligned

³ Incompressible data performance is measured using AS-SSD; 64 thread for 4K specs

OCZ Vertex 3 SSD Series – MAX IOPS Edition

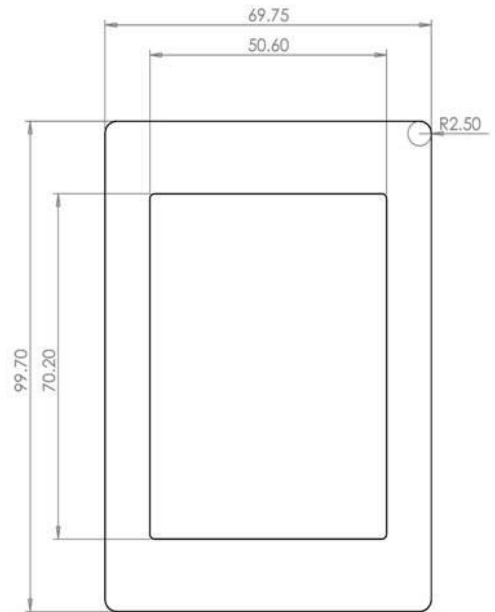
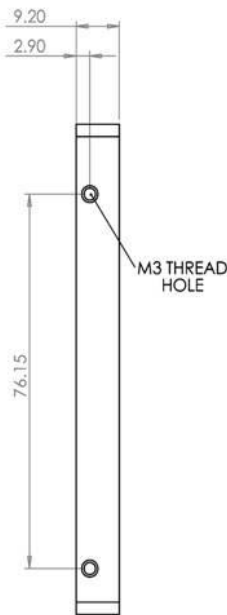
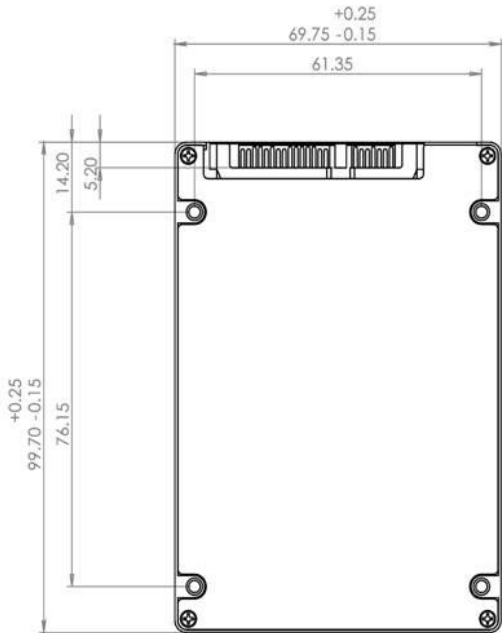
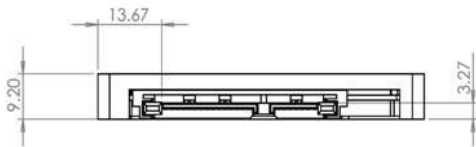
Award-winning SSD performance with maximum throughput



MECHANICAL SPECIFICATIONS



Box Dimensions:
152.4 x 127 x 14.5mm



NOTE:

1. THIS DRAWING MUST BE USED TO IDENTIFY CRITICAL DIMENSIONS, TOLERANCES AND REFERENCE.
2. INTERPRET DIMENSION AND TOLERANCE PER ANSI 14.5M-1994
3. UNLESS OTHERWISE SPECIFIED, DIMENSIONS ARE IN MILLIMETERS

ORDERING INFORMATION

PRODUCT	RAW CAPACITY	IDEMA CAPACITY	PART NUMBER	UPC
Vertex 3 MAX IOPS 2.5" SSD	128GB	120GB	VTX3MI-25SAT3-120G	842024026464
Vertex 3 MAX IOPS 2.5" SSD	256GB	240GB	VTX3MI-25SAT3-240G	842024026471